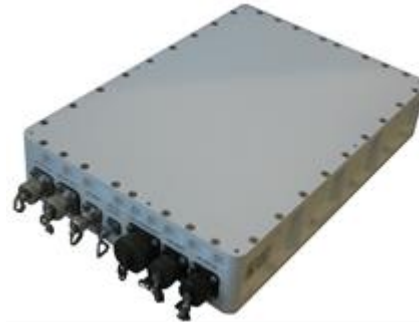


# TEST LOOP TRANSLATOR Ku-BAND HUBMOUNT

ACTLT-Ku-E1-V2



Ed.03  
27/05/13

**ACORDE Ku-band frequency test loop translator hubmount (outdoor applications) is integrated in sealed box along with the rest of the necessary elements to convert from transmission Ku-band to reception Ku-band, such as the control card and the power supply. Specifications have been optimised to provide the user an efficient frequency conversion. It also enables the configuration of the gain level of the converter.**

## FEATURES

- Automatic 10 MHz internal/external reference selection
- Remote Control via Ethernet TCP/IP or via serial interface (RS485)
- Low intermodulation distortion
- External alarm via remote control interface
- Compact hubmount package (outdoor applications)

## TECHNICAL SPECIFICATIONS

Input frequency .....	13.75 – 14.5 GHz
Input level .....	0 to -30 dBm with internal AGC
Input returns loss .....	15 dB min
Input impedance.....	50 Ω
Output frequency.....	10.7 – 12.75 GHz
Output return loss.....	15 dB min
Output impedance .....	50 Ω
Output level .....	-20 to -50 dBm (selected by software)
Spurious signal dependent.....	< -50 dBc @ Pout = -30 dBm
Spurious signal independent.....	< -60 dBm
Gain adjustment range .....	30 dB
Gain adjustment step .....	1 dB
Gain flatness .....	± 1.5 dB max
Gain stability versus temperature.....	± 1.5 dB over the whole range
Noise figure .....	< 15 dB @ min. input level, max. output level
Image rejection.....	> 60 dB
Mute rejection.....	> 50 dB

## LOCAL OSCILLATOR

LO frequency.....	LO1 (for RF output 10.7 – 11.45 GHz)
(LO frequency selection by software)	LO2 (for RF output 11.25 – 12.0 GHz)
	LO3 (for RF output 12.0 – 12.75 GHz)
LO bandwidth .....	± 5 MHz
Frequency set step .....	1 kHz
Output phase noise:	
100 Hz.....	-70 dBc/Hz
1 KHz.....	-80 dBc/Hz
10 KHz .....	-90 dBc/Hz
Reference frequency.....	10 MHz
Reference mode .....	Internal (external selected automatically on presence)
Reference input level.....	0 dBm ± 3 dB
Reference stability .....	±2x10 <sup>-8</sup> /day
	±1x10 <sup>-7</sup> /year

## POWER SUPPLY

AC input voltage .....	85 - 265 VAC (47-63 Hz)
Power consumption .....	30 W (typ.)

## ENVIRONMENTAL SPECIFICATIONS

Storage temperature .....	-40 to +80°C
Operating temperature .....	-40 to +60°C
Relative humidity .....	up to 95%
Operating altitude .....	up to 3500 m

## MECHANICAL SPECIFICATIONS

Interfaces:	
RF output .....	N female
IF input .....	N female
LO monitor .....	SMA female
Ref. ext. input.....	BNC female
AC line .....	MS3112E12-3P
Serial port.....	MS3112E12-14S
Ethernet.....	RJF21G (RJ-45)
Dimensions .....	350 x 240 x 65 mm
Weight .....	7 kg
Finish.....	White RAL 9003