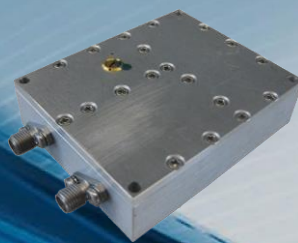


PHASE LOCKED DRO MODULE

ACPLDRO-SL Single Loop



Ed.01
23/09/10



ACPLDRO is a multiplied frequency single loop phase-locked dielectric resonator oscillator designed to meet all requirements of the modern commercial and military telecommunication systems.

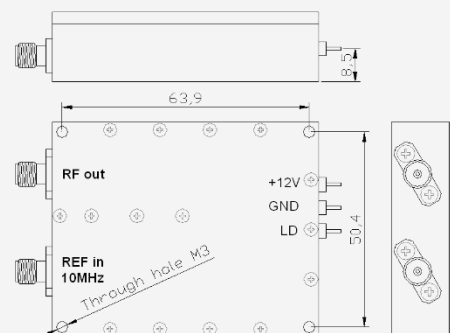
It was designed and tested to operate in extreme environmental conditions, low/high temperatures and stress. Beside excellent temperature stability, low phase noise and spectral purity phase locked to 5 or 10MHz reference oscillator ACPLDRO has very low power consumption. Operating temperature range is -20°C to +60°C (-40°C to +60°C option is also available).

INPUT SPECIFICATIONS

Reference frequency	10 MHz (5 MHz as option)
Reference mode	External
Reference frequency level.....	0 dBm ± 3 dB

OUTPUT SPECIFICATIONS

Output frequency	4.5 – 6.0 GHz (C-band)
(Other frequency bands available upon request)	6.0 – 10.5 GHz (X-band)
.....	10.5 – 15.0 GHz (Ku-band)
Output power	13 dBm ± 1 dB
Output impedance	50 Ω
Output VSWR	< 1.5:1
Output power stability vs temperature.....	± 1.5 dB
Output phase noise @ 12.8 GHz:	
100 Hz	-70 dBc/Hz
1 kHz	-75 dBc/Hz
10 kHz	-85 dBc/Hz
100 kHz	-100 dBc/Hz
1 MHz.....	-125 dBc/Hz
Harmonics	≤ -25 dBc
Spurious	< -70 dBc



POWER SUPPLY

Input voltage	+ 12 Vdc
Current consumption.....	280 mA (typ.)

ENVIRONMENTAL SPECIFICATIONS

Storage temperature	-40 to +85°C
Operating temperature	-20 to +60°C (-40 to +60°C as option)

MECHANICAL SPECIFICATIONS

Interfaces:	
Reference input:	SMA female
RF output:	SMA female
DC input:	7A feed thru
Lock Detect (0/+12V):	7A feed thru
Dimensions.....	56 (L) x 70 (W) x 18 (H) mm
Weight	150 g